

Manual do Sistema de Concurso

Versões		
Autor	Versão	Data
Jeferson Bernardes Roberto	1.0	06/11/2014
Jeferson Bernardes Roberto	1.1	07/11/2014
Jeferson Bernardes Roberto	1.2	04/07/2016
Jeferson Bernardes Roberto	1.3	11/07/2016

Sumário

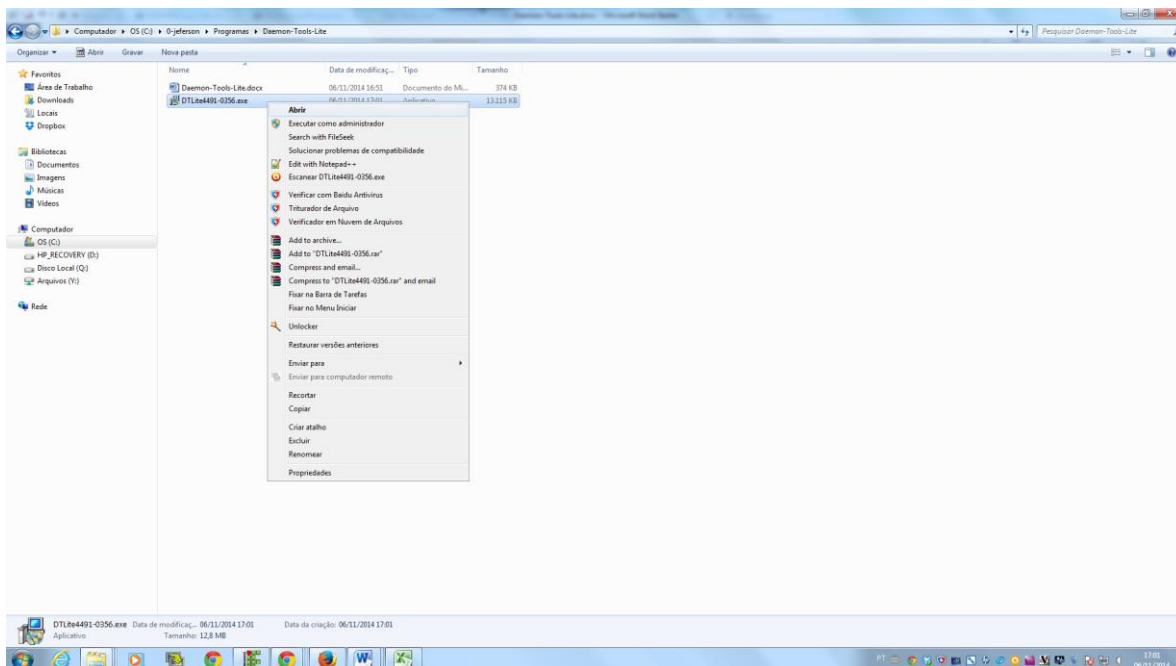
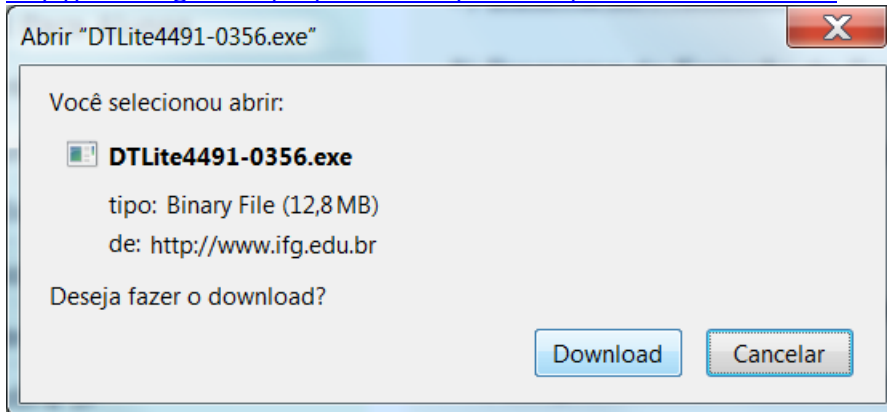
Instalar DaemonToolsLite.....	2
Baixar e instalar	2
Instalar Cliente Oracle	8
Baixar	8
Instalar	9
Instalar Sistema de Concurso	16
Baixar o Sistema de concurso	16
Criar usuário para acesso ao sistema	22
Erro: "Concursos.mdl.exe parou de funcionar"	23
Solução	24

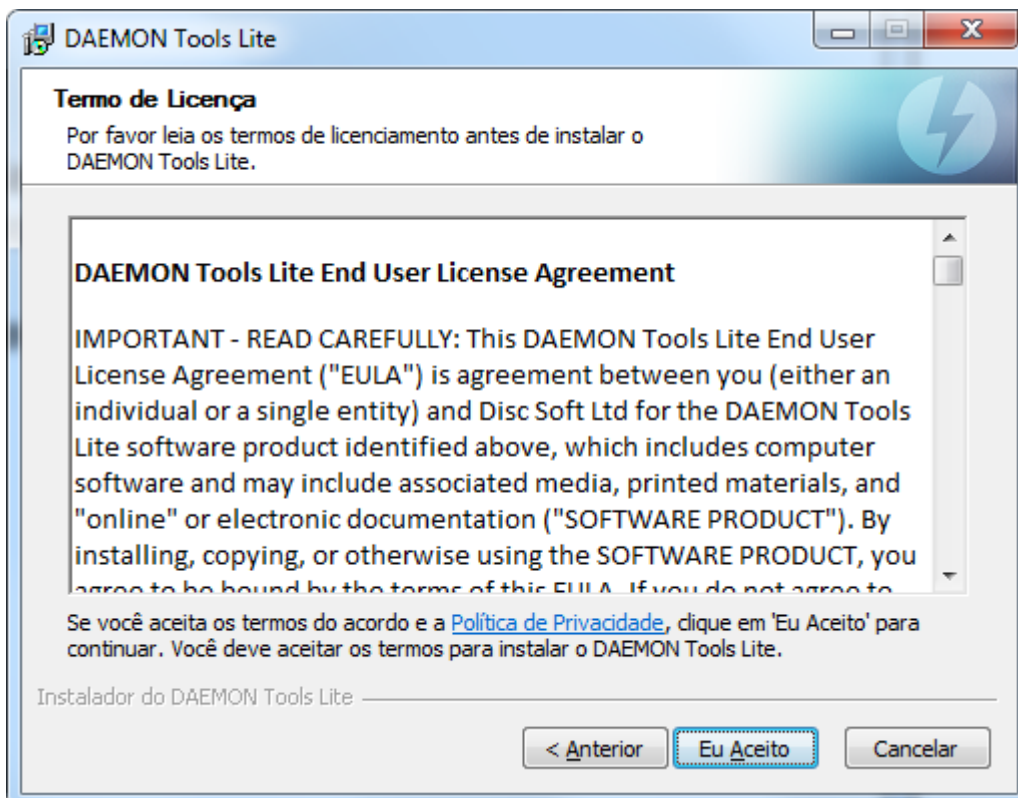
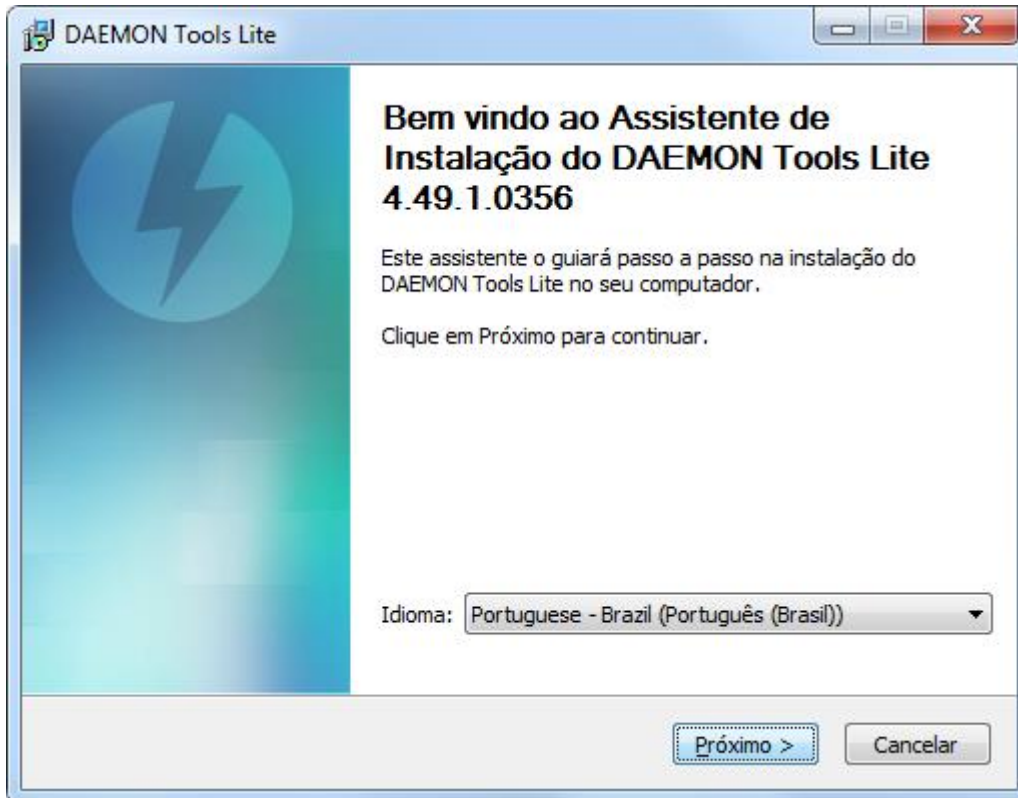
Instalar DaemonToolsLite

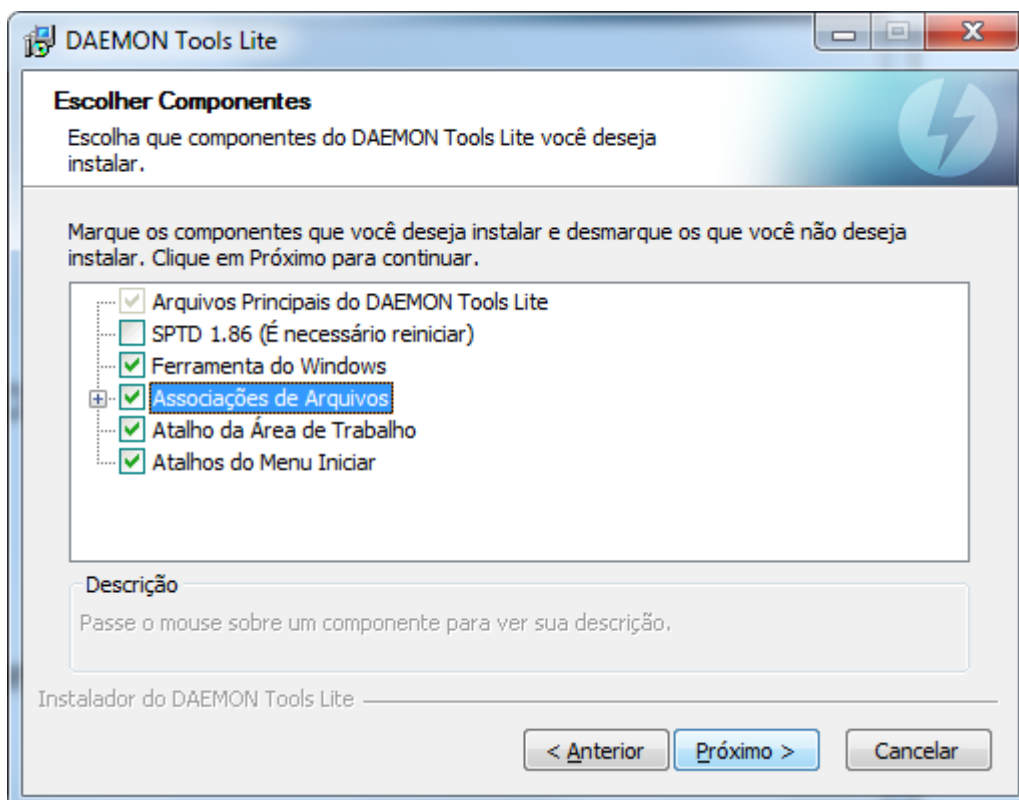
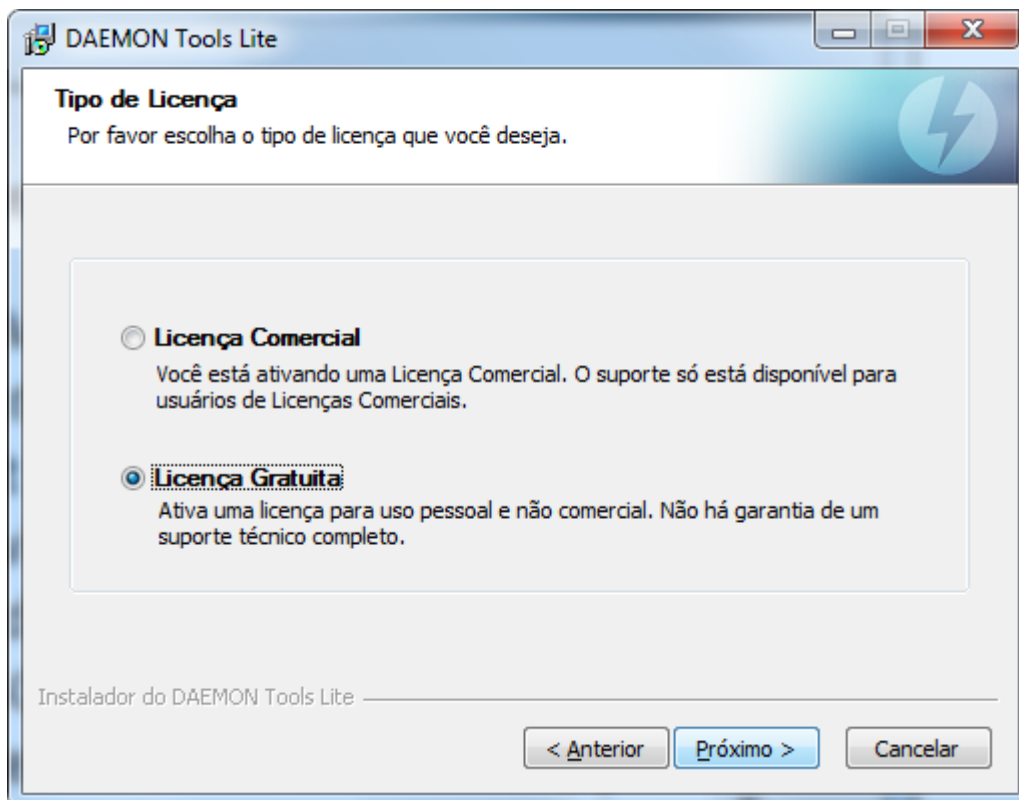
Programa para emulação de imagens de CD e DVD.

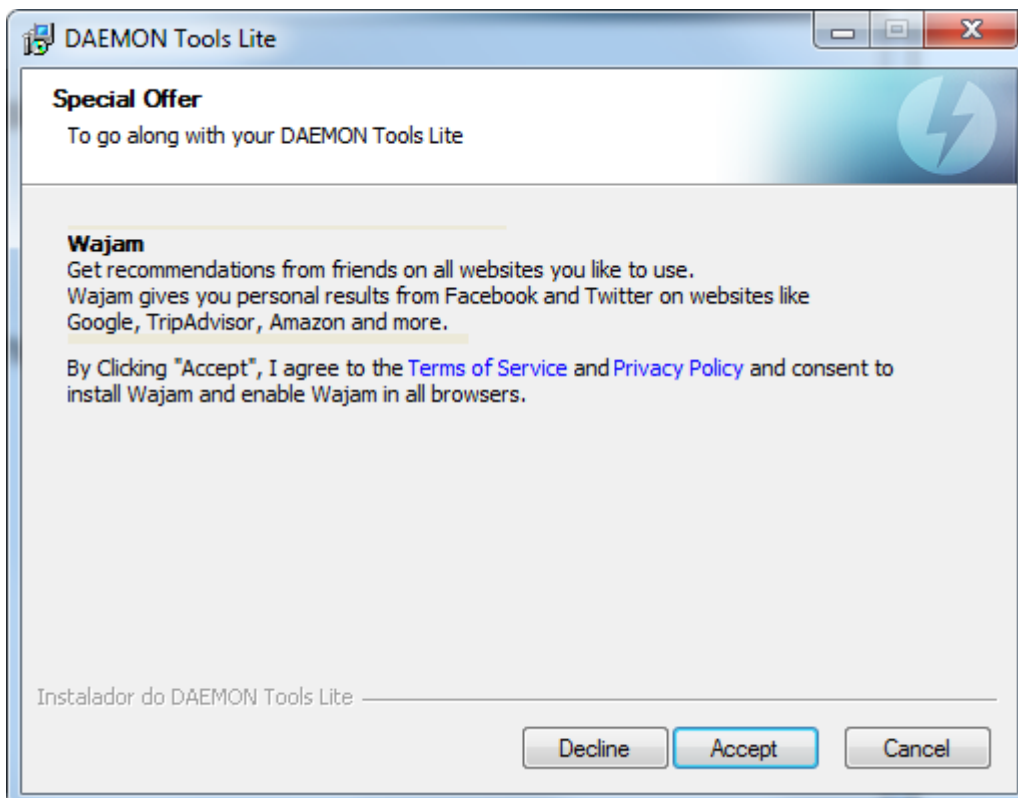
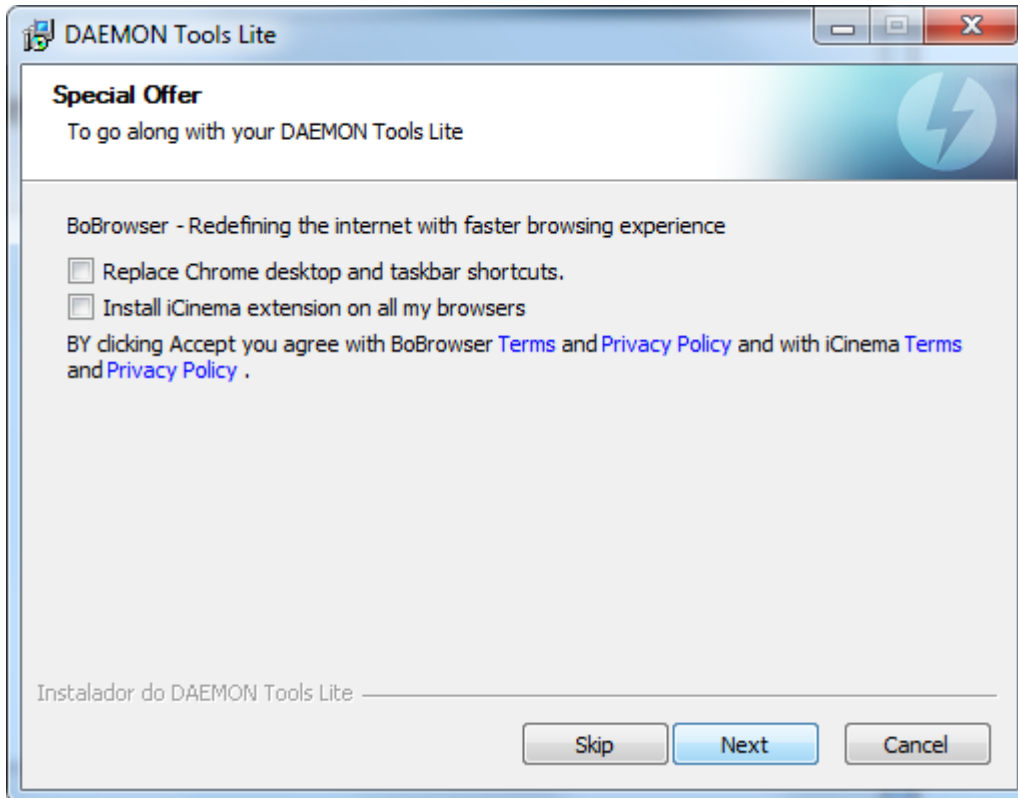
Baixar e instalar

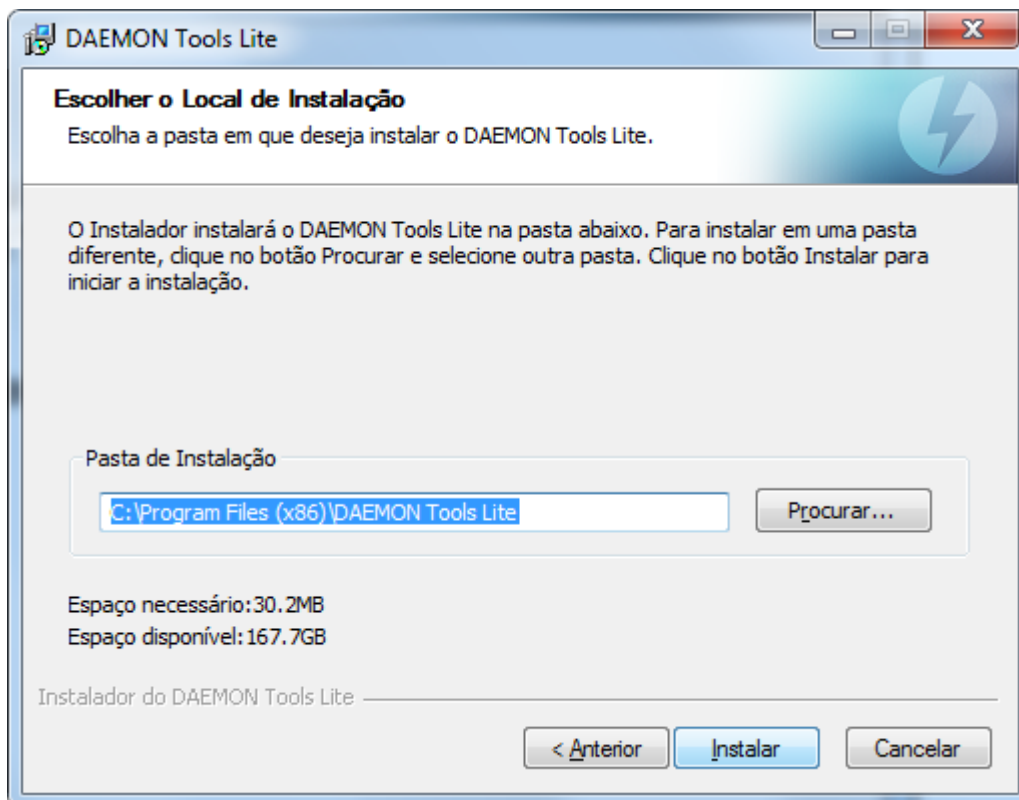
<http://www.ifg.edu.br/dti/downloads/sistemas/DTLite4491-0356.exe>



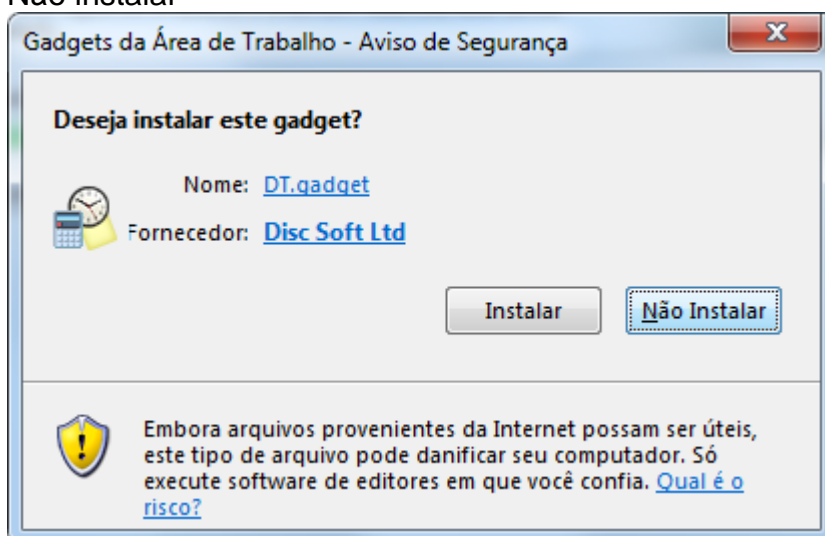


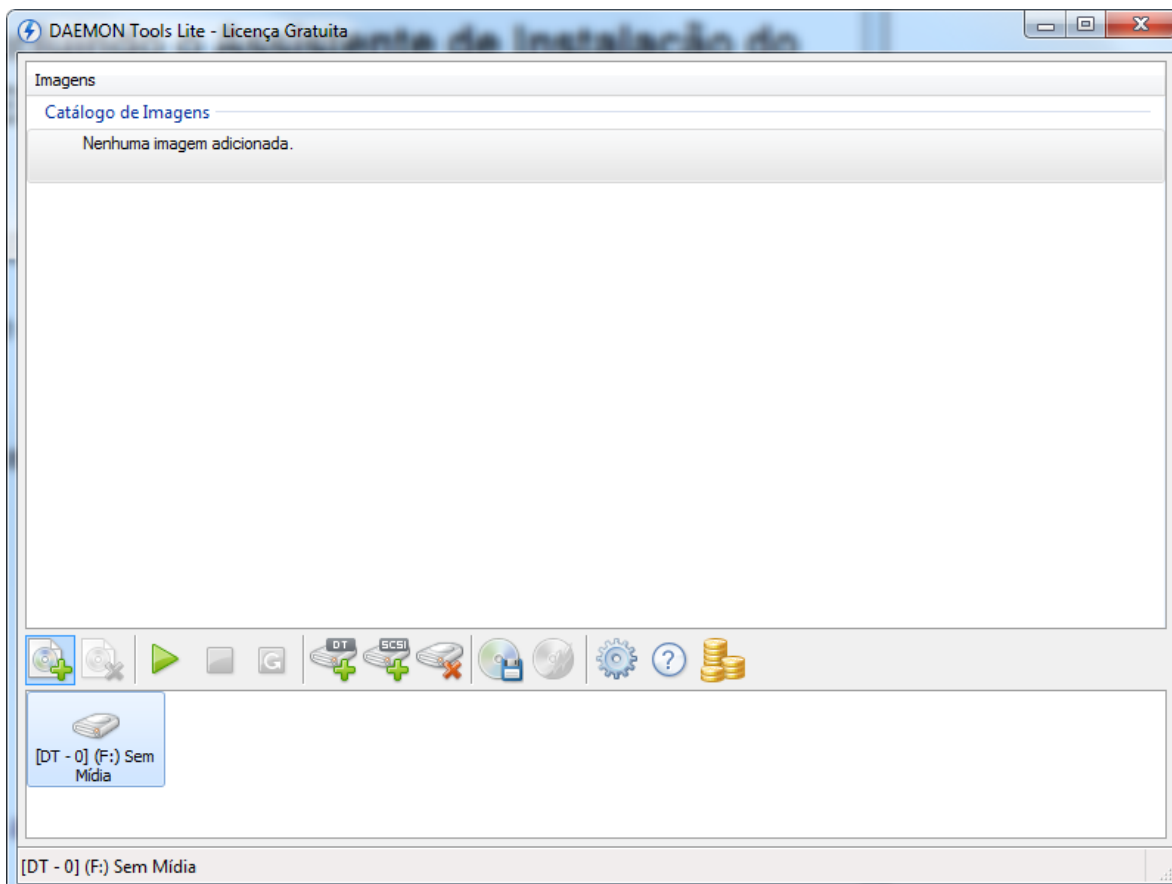
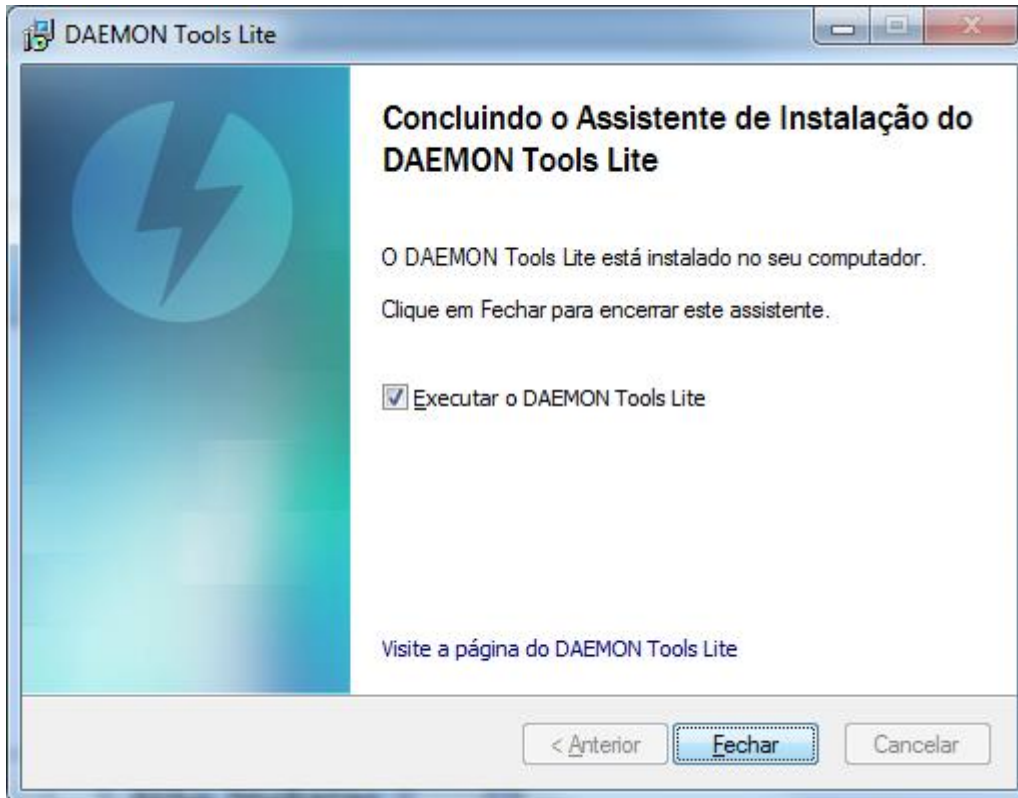






Não instalar





Instalar Cliente Oracle

Baixar

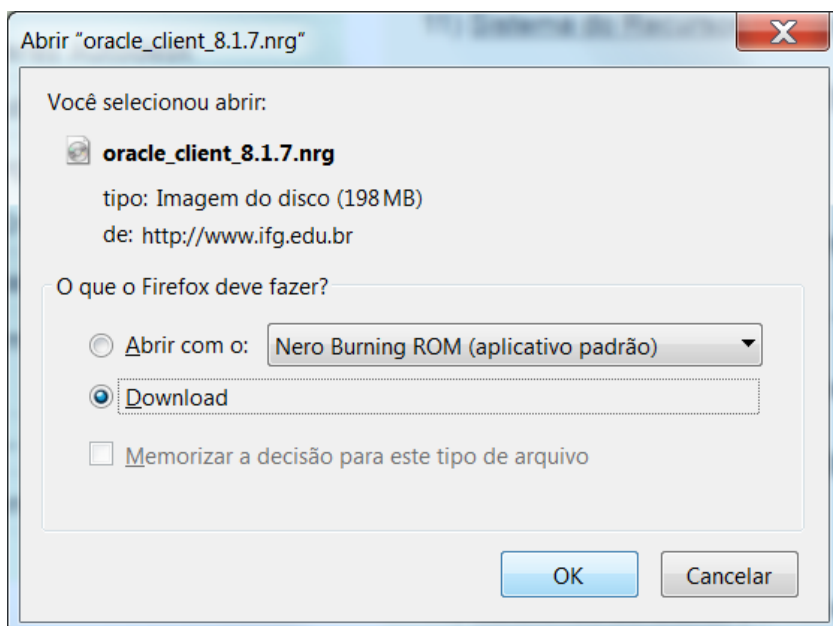
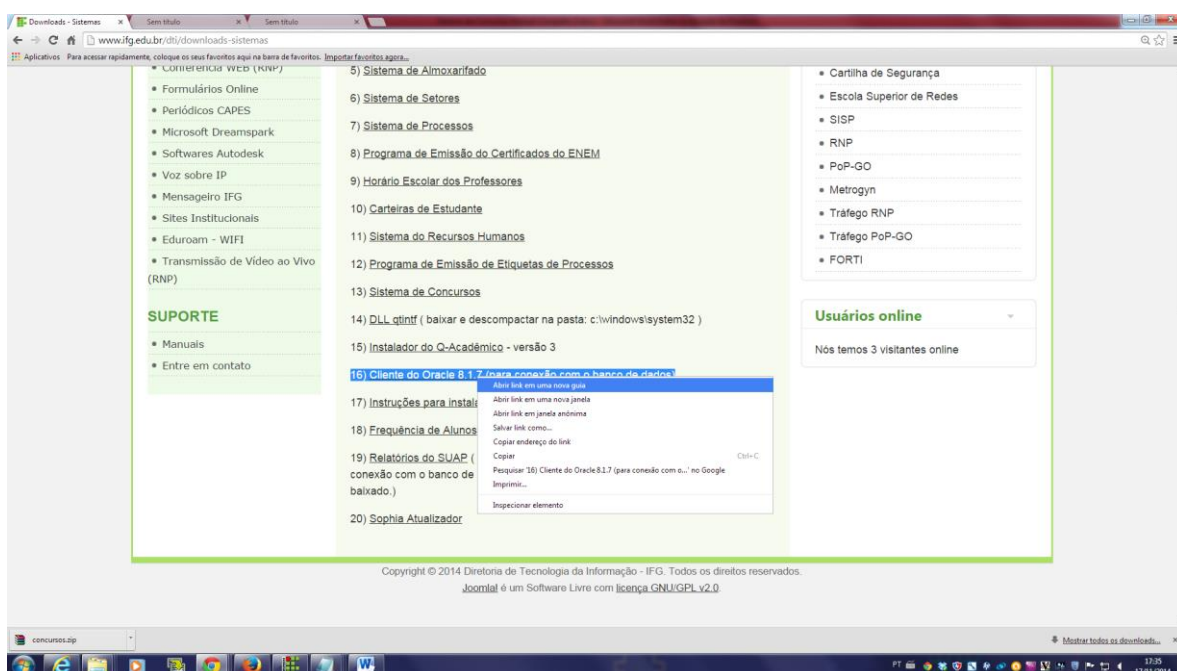
Link direto:

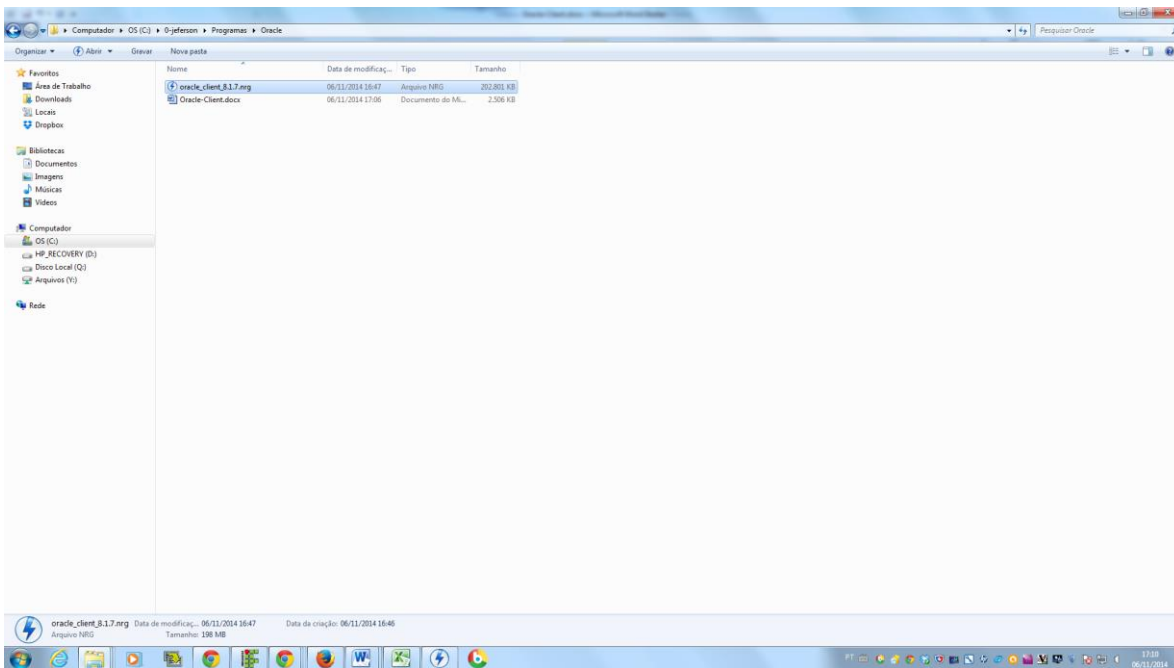
www.ifg.edu.br/dti/downloads/sistemas/oracle_client_8.1.7.nrg

Link passo-a-passo:

<http://www.ifg.edu.br/dti/downloads-sistemas>

16) Cliente do Oracle 8.1.7 (para conexão com o banco de dados)

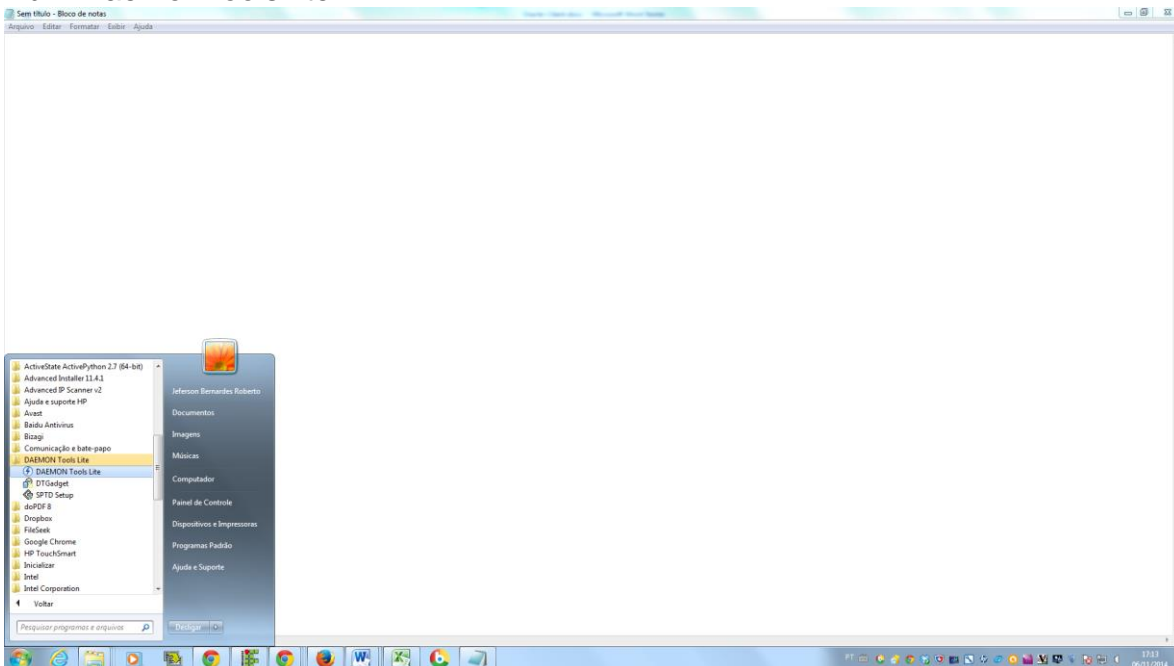




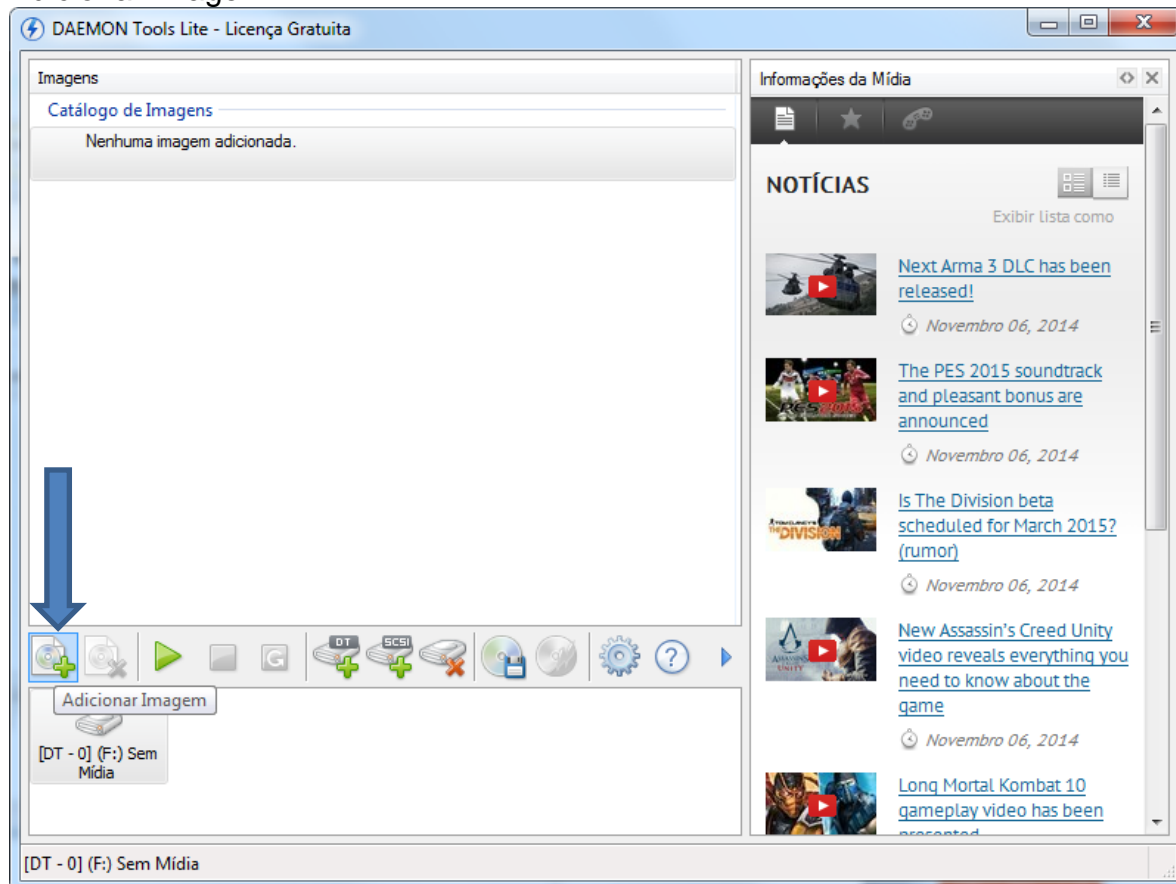
Instalar

Abrir o arquivo “oracle_client_8.1.7.nrg” usando o programa DaemonToolsLite.
* Obs.: Outra opção é gravar um CD com a imagem “oracle_client_8.1.7.nrg”.

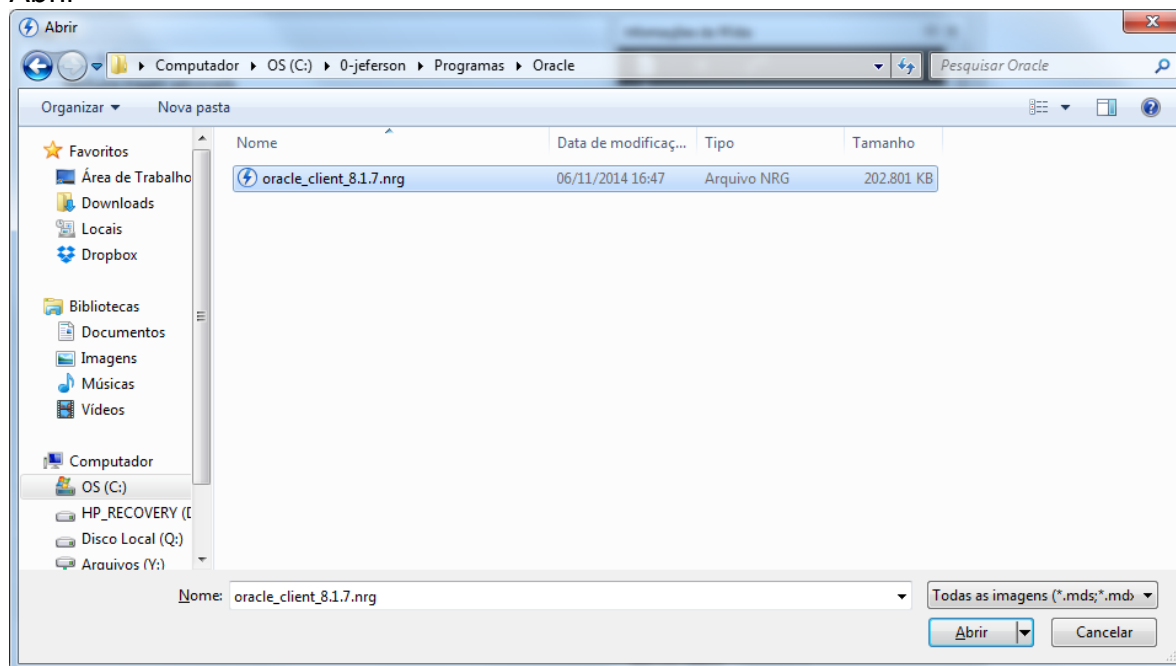
Abrir DaemonToolsLite



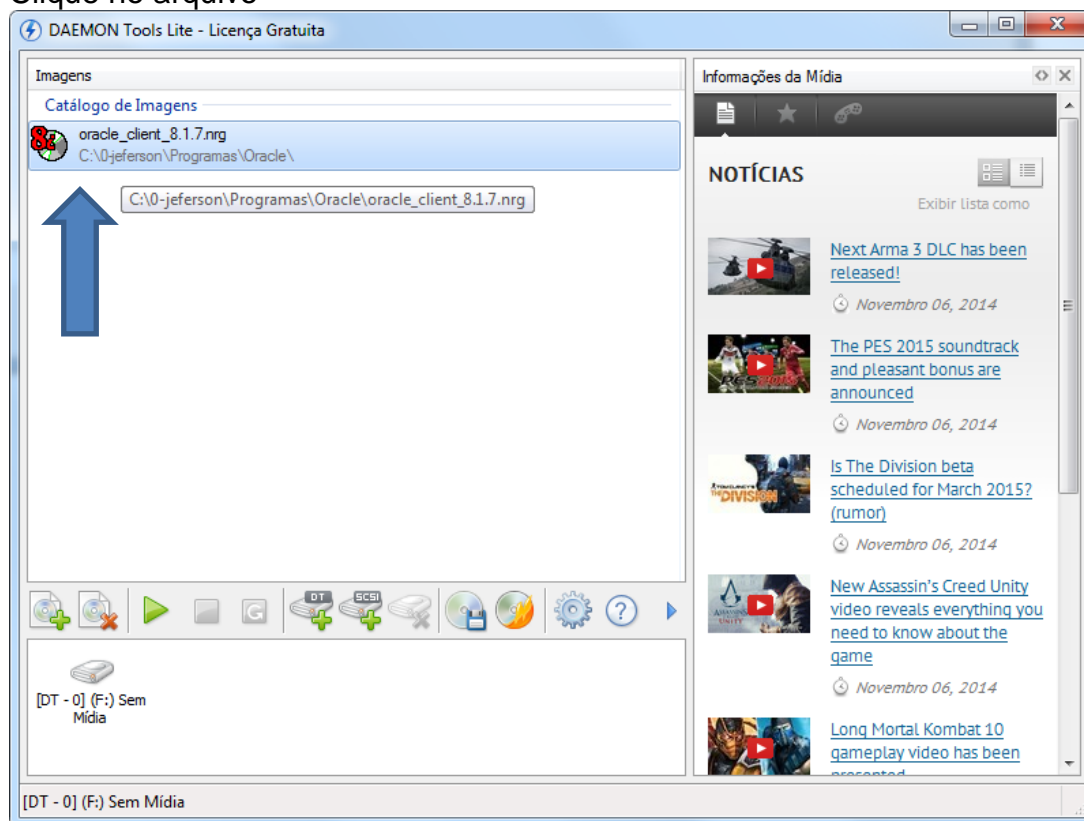
Adicionar Imagem



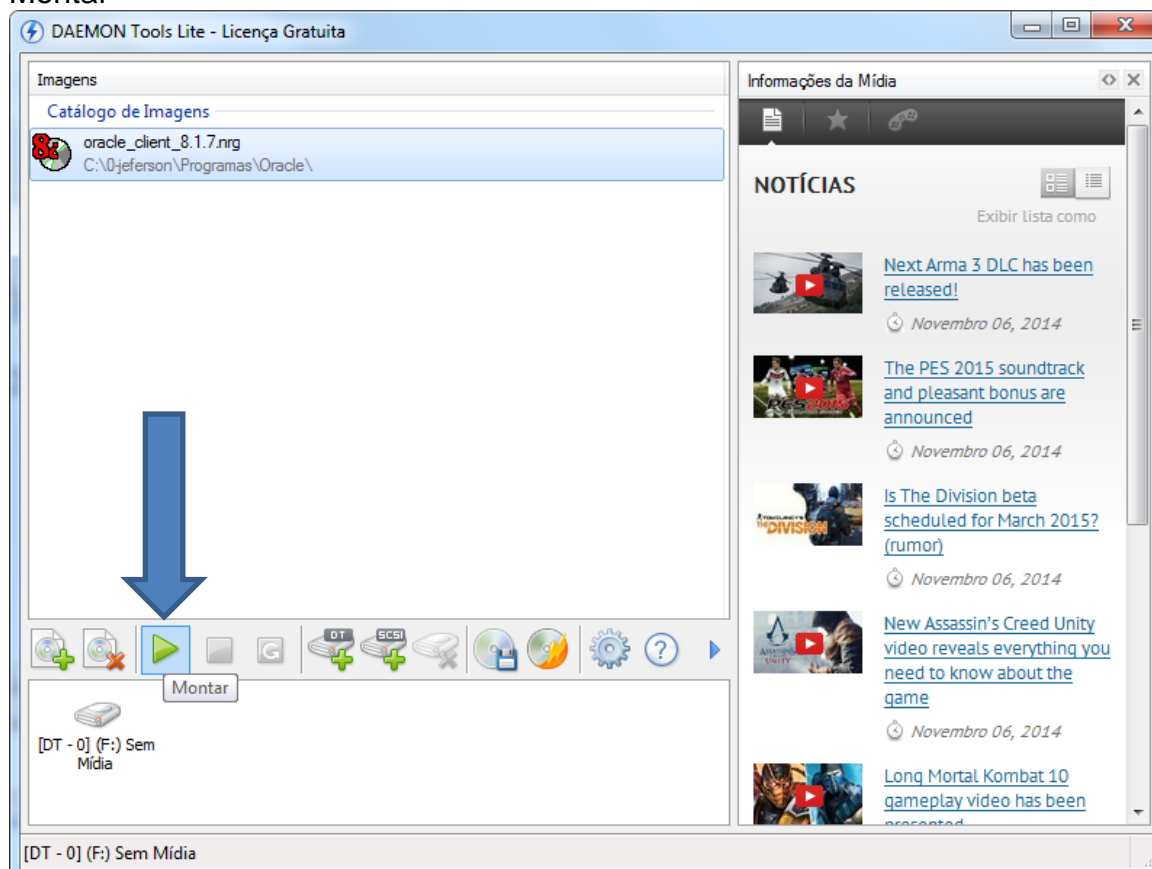
Procurar o arquivo “oracle_client_8.1.7.nrg” baixado recentemente.
Abrir



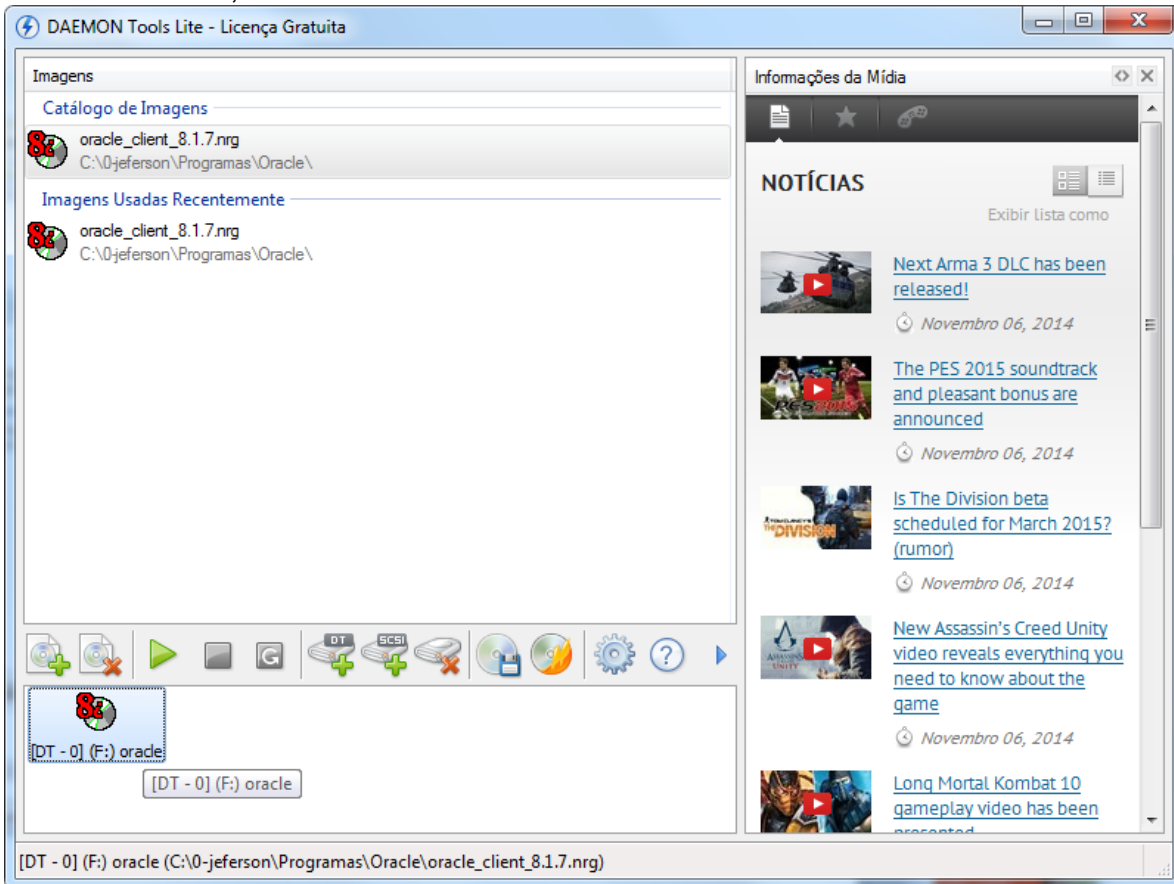
Clique no arquivo



Montar



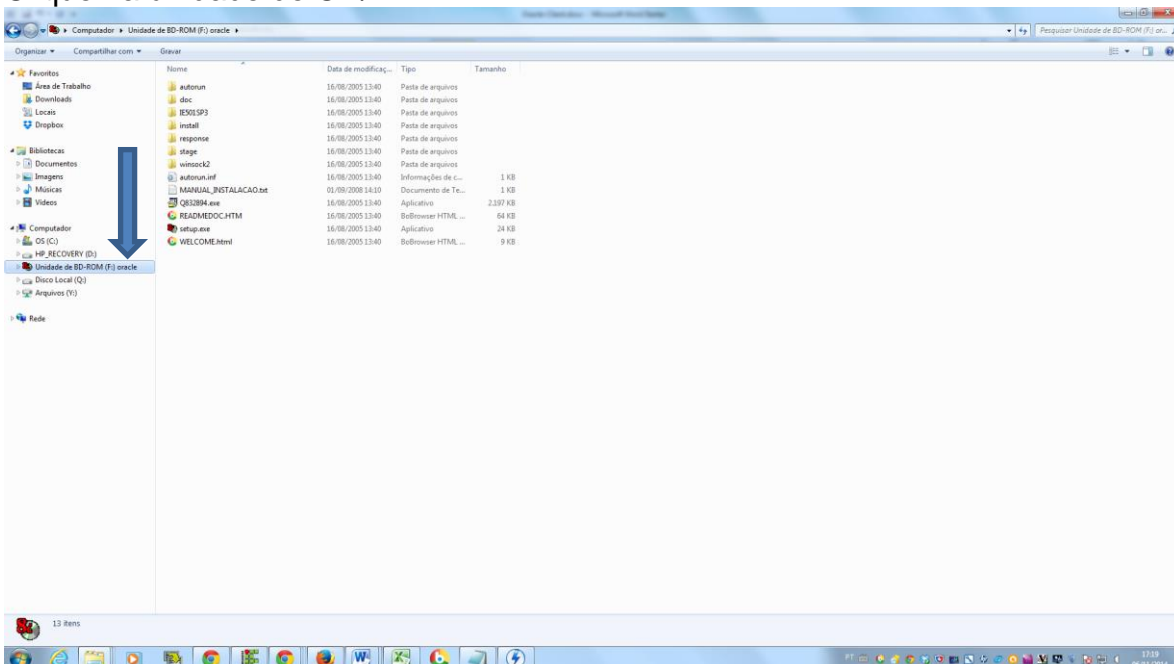
Neste momento, é como se tivesse lendo um CD ou DVD



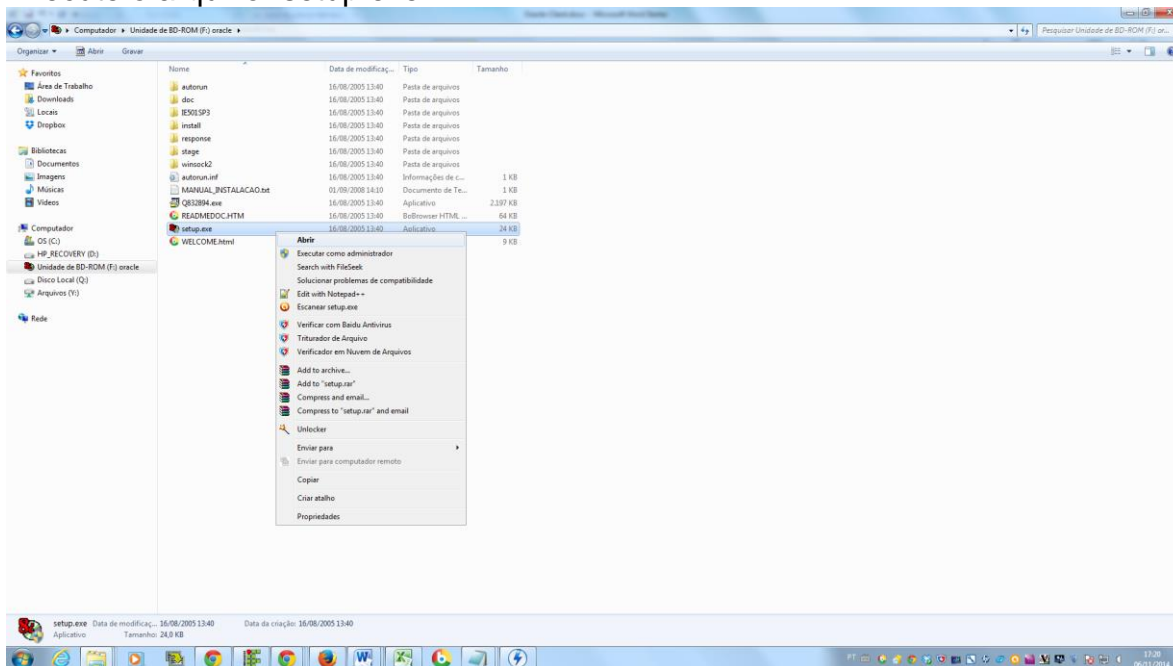
Abrir Windows Explorer



Clique na unidade de CD/DVD



Execute o arquivo “setup.exe”

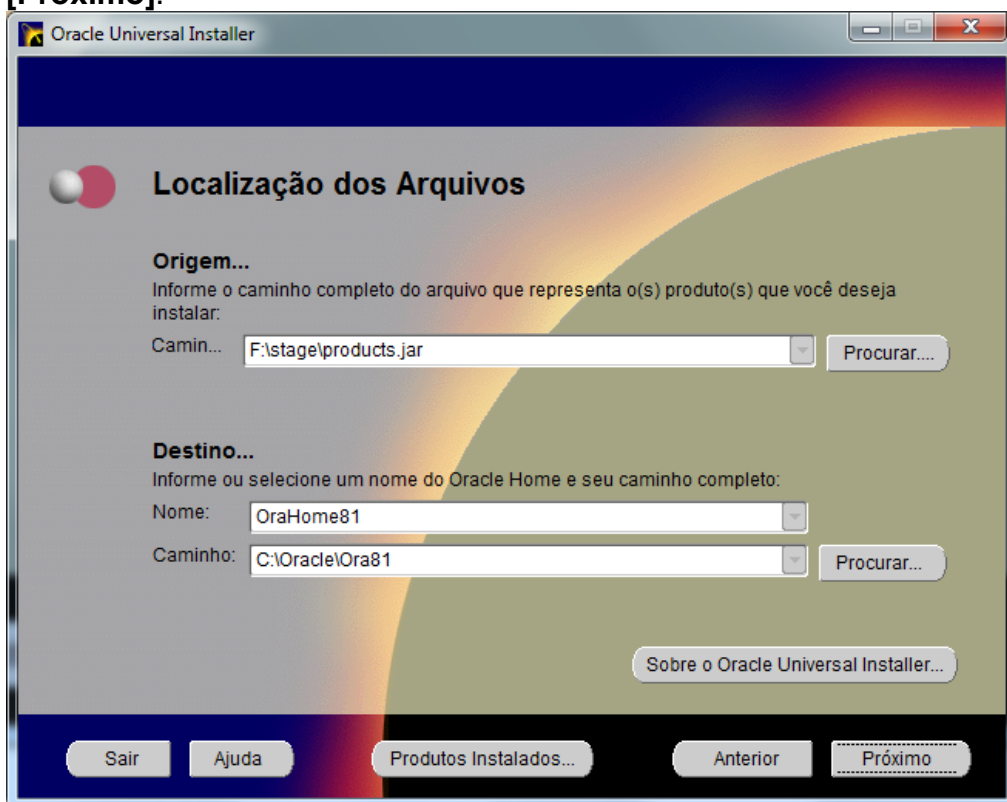


Para continuar a instalação, pressione o **botão [Próximo]**.

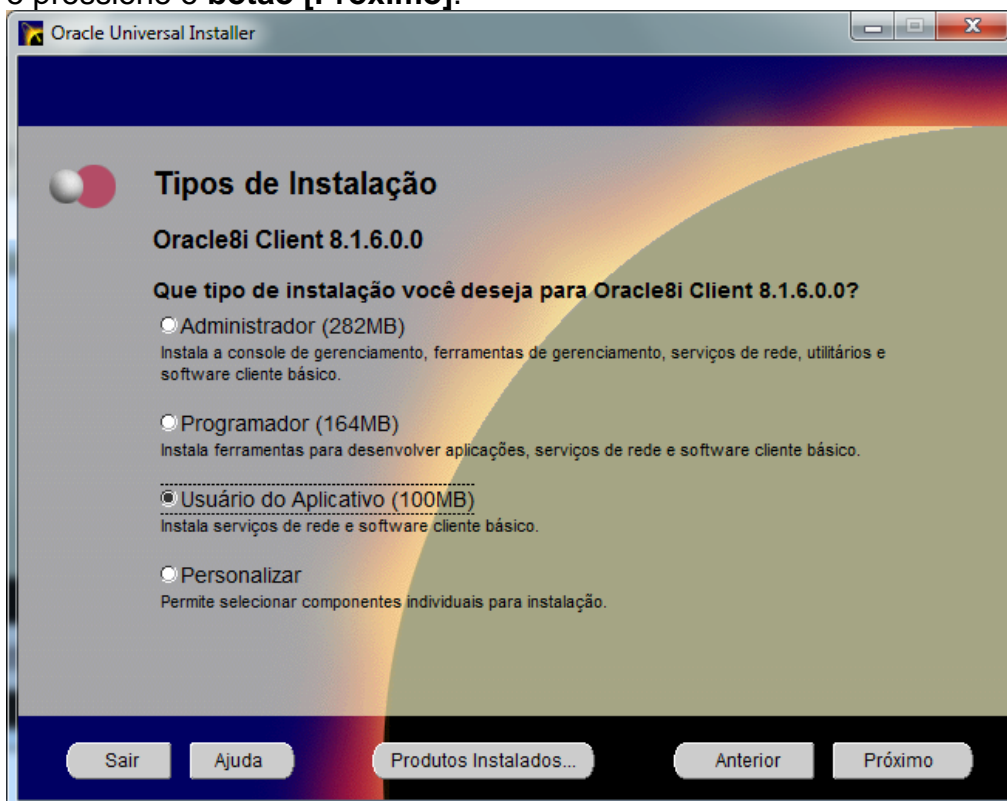
Obs.: Você pode verificar outros produtos ORACLE instalados no computador pressionando o botão [Produtos Instalados] e até desinstalar estes produtos pelo botão [Desinstalar Produtos].



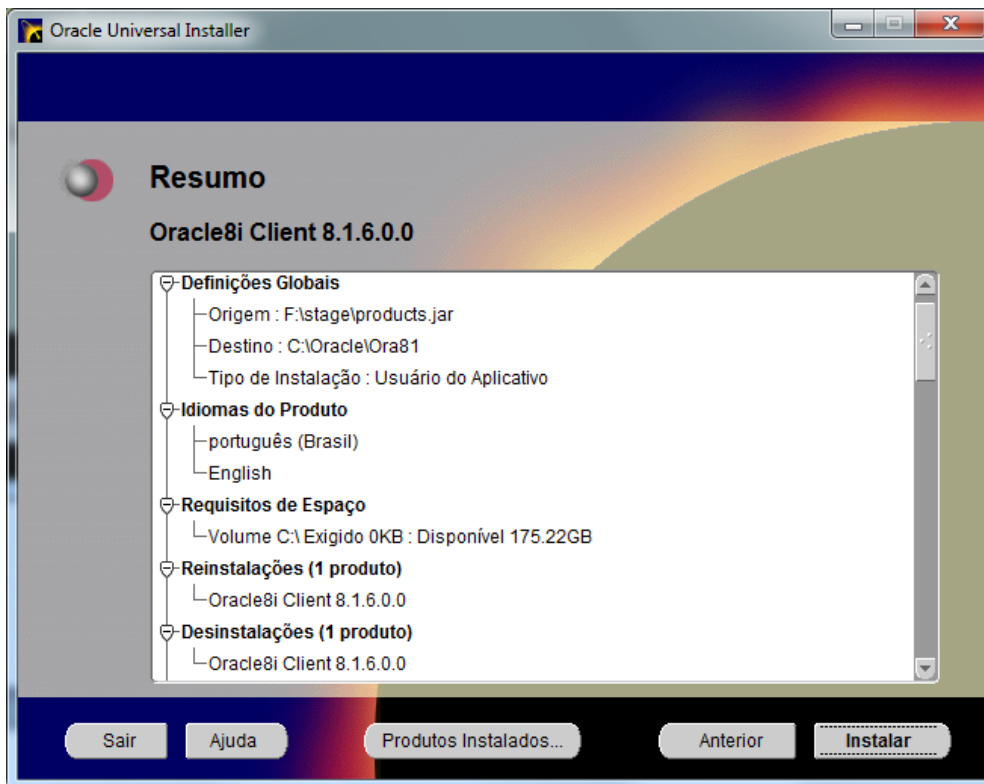
A próxima tela, Localização dos Arquivos, mostra os caminhos de Origem e Destino dos arquivos a serem instalados. Use os valores default para os caminhos e pressione o botão **[Próximo]**.



Selecione o Tipo da Instalação que você deseja. Você deve selecionar o tipo: **Usuário do Aplicativo (100MB)**, que instala as opções necessárias para a conexão ao banco de dados, e pressione o botão **[Próximo]**.



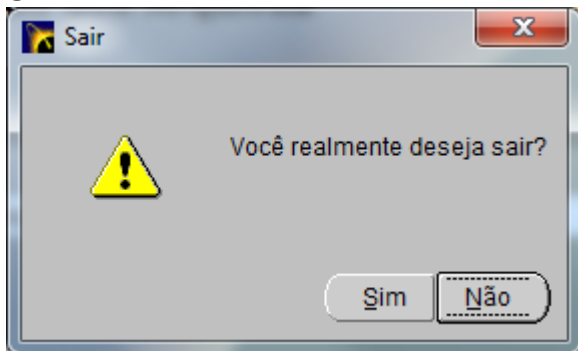
Esta tela mostra um resumo dos produtos a serem instalados. Pressione o **botão [Instalar]**.



Sair



Sim



Instalar Sistema de Concurso

Baixar o Sistema de concurso

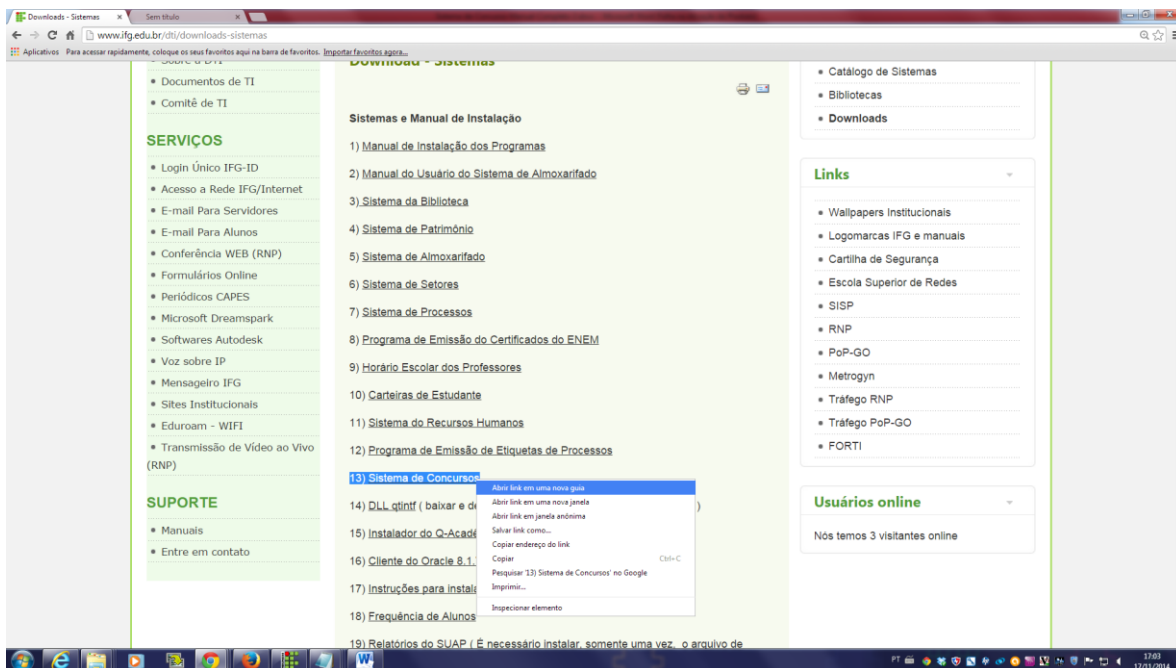
Link direto:

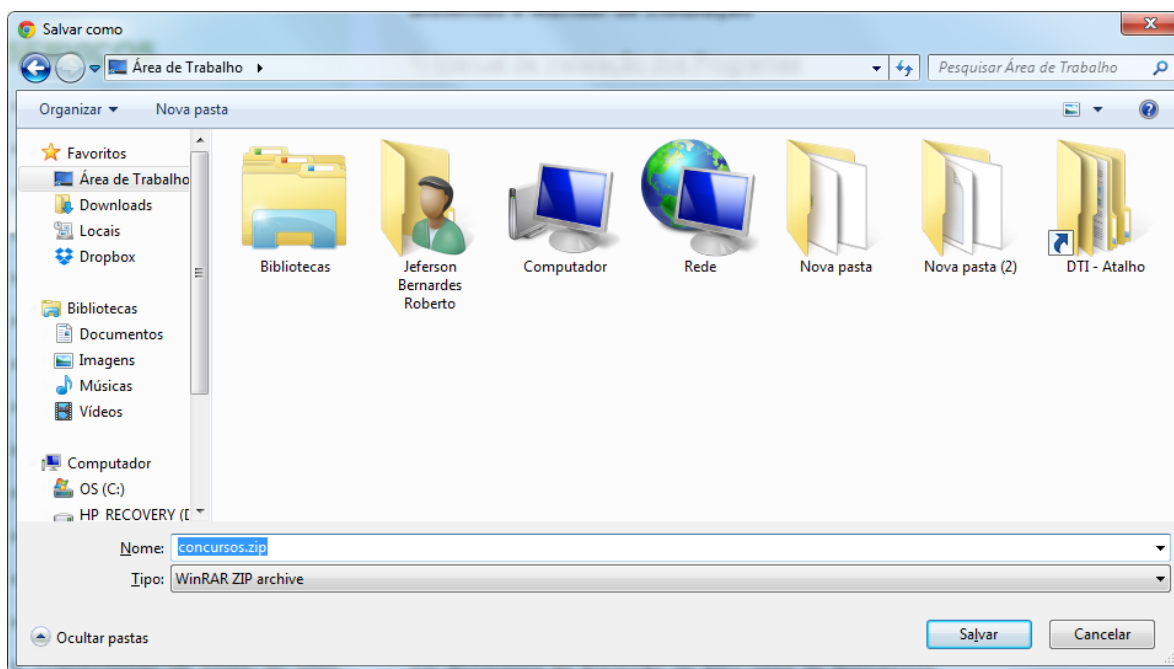
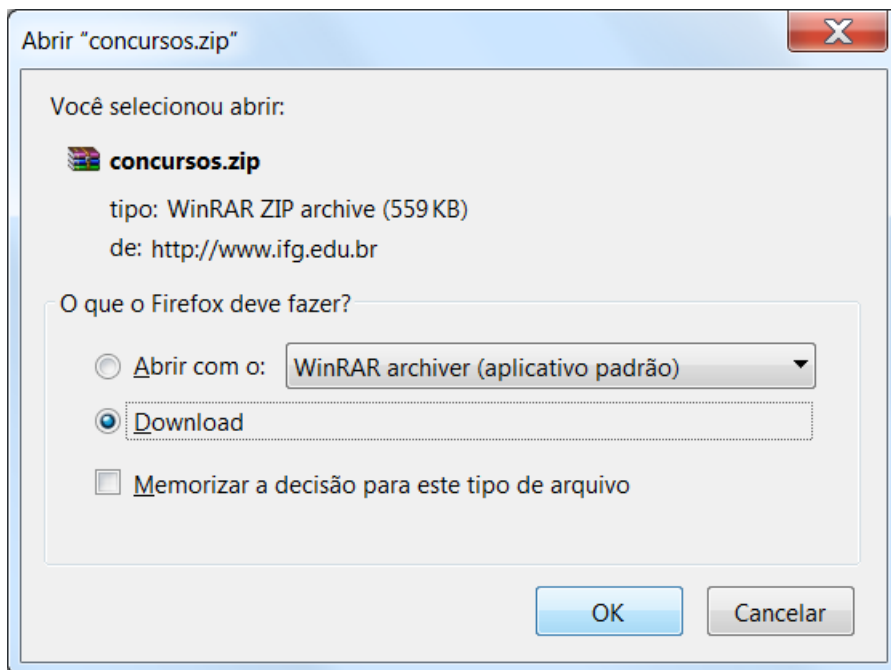
www.ifg.edu.br/dti/downloads/sistemas/concursos.zip

Link passo-a-passo:

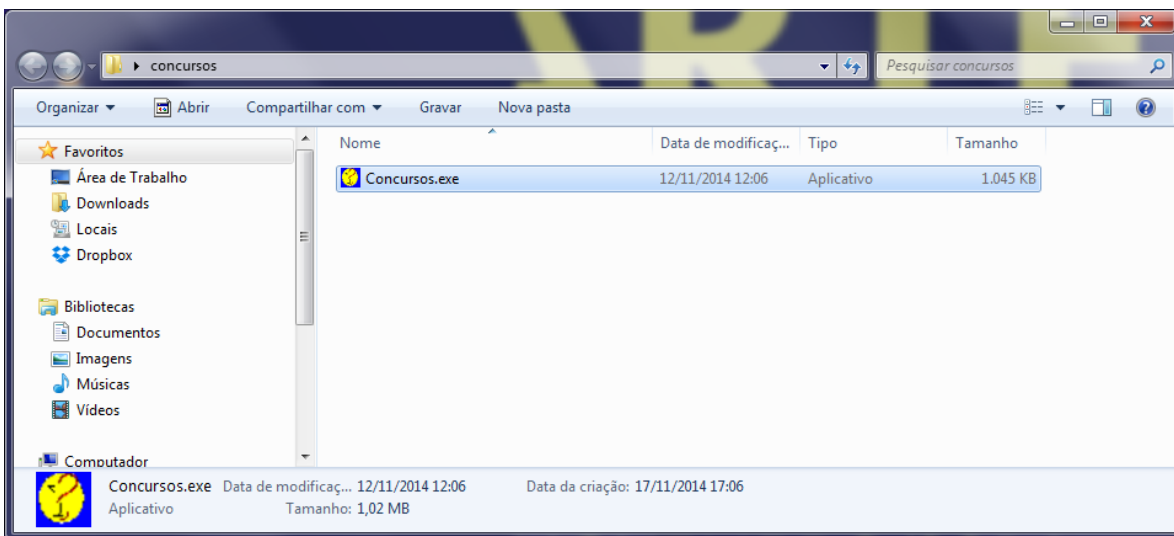
<http://www.ifg.edu.br/dti/downloads-sistemas>

13) Sistema de Concursos

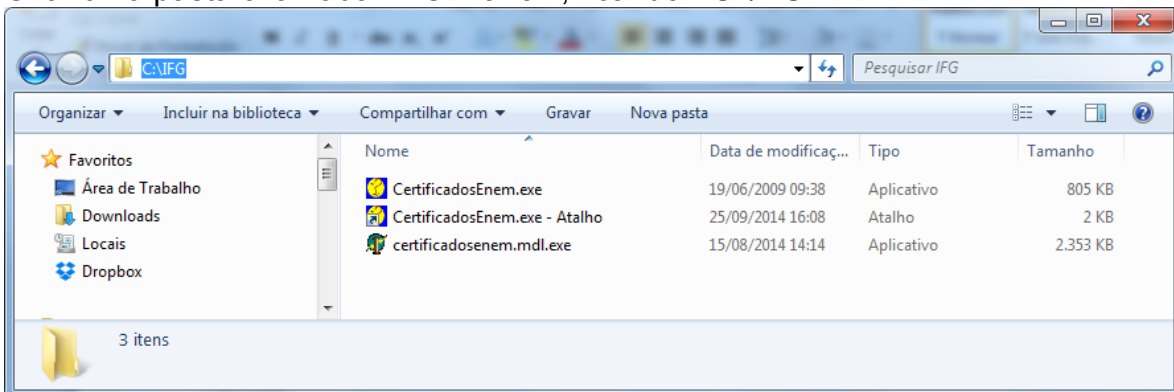




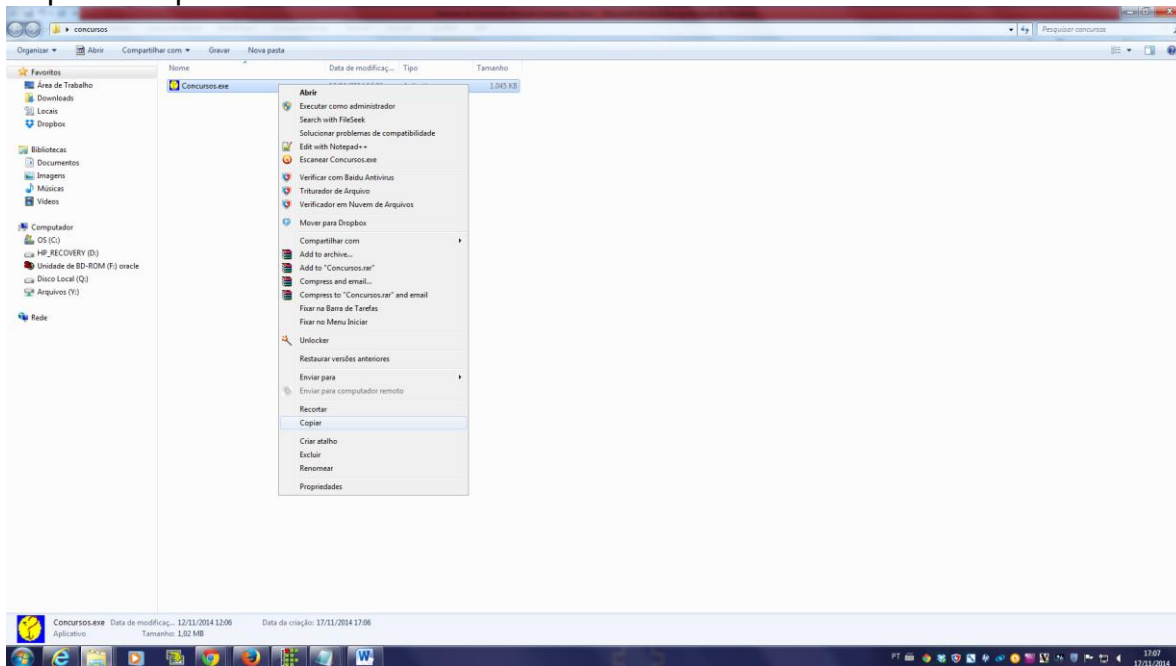
Extrair arquivo .zip



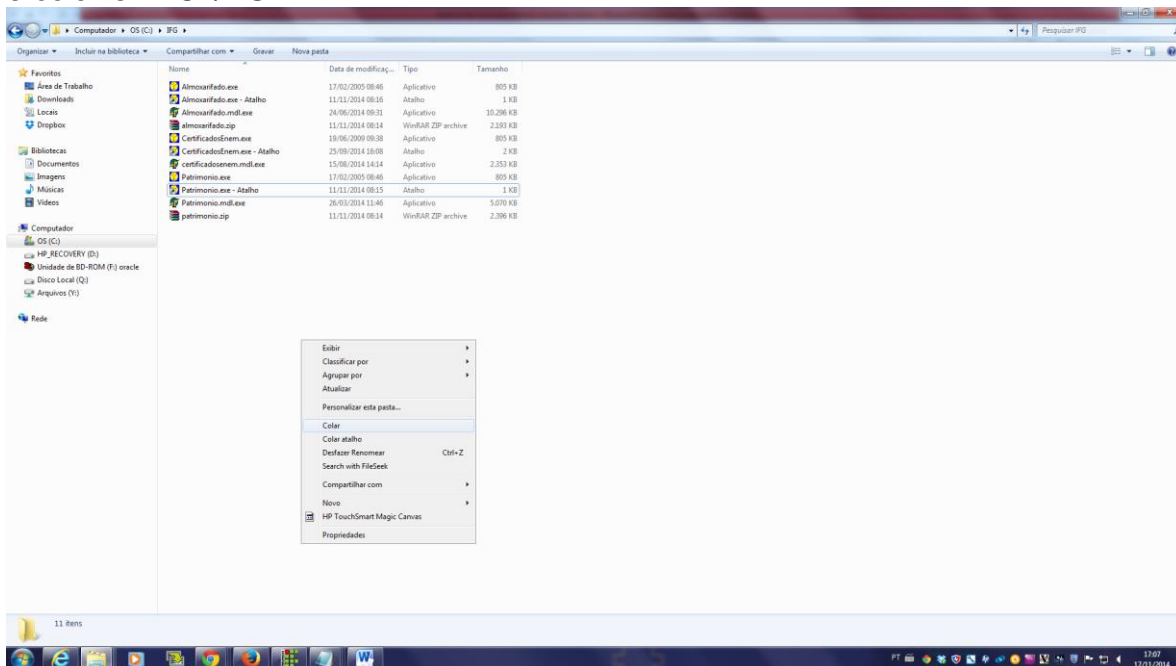
Criar uma pasta chamada "IFG" na raiz, ficando: "C:\IFG"



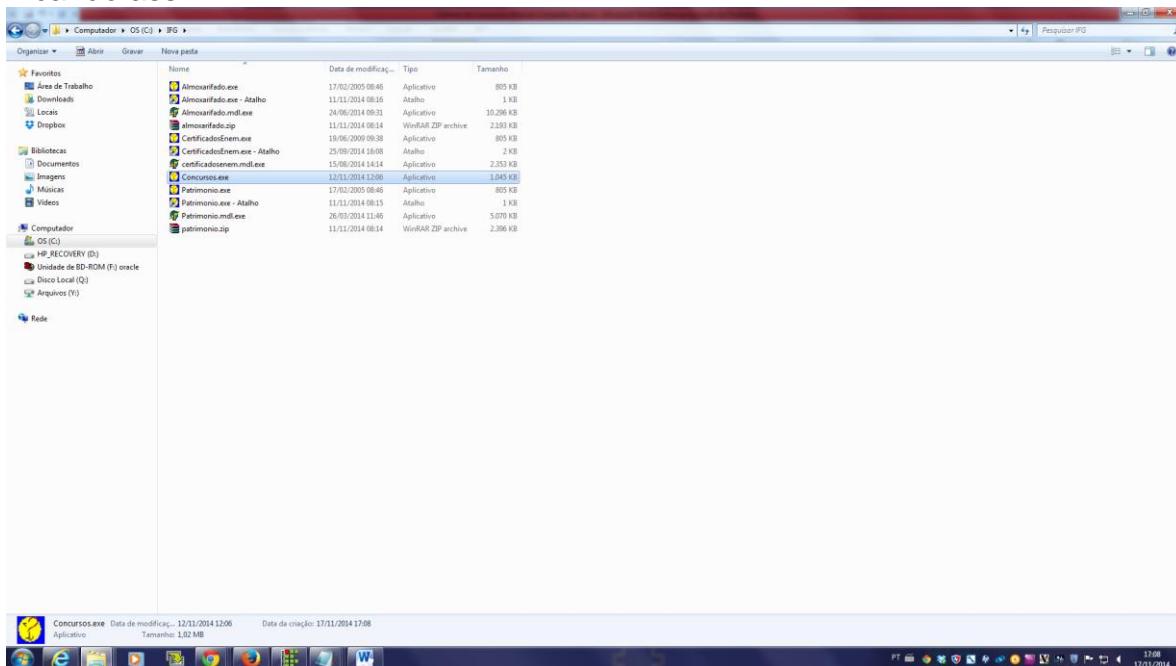
Copiar o arquivo baixado “Concursos.exe”



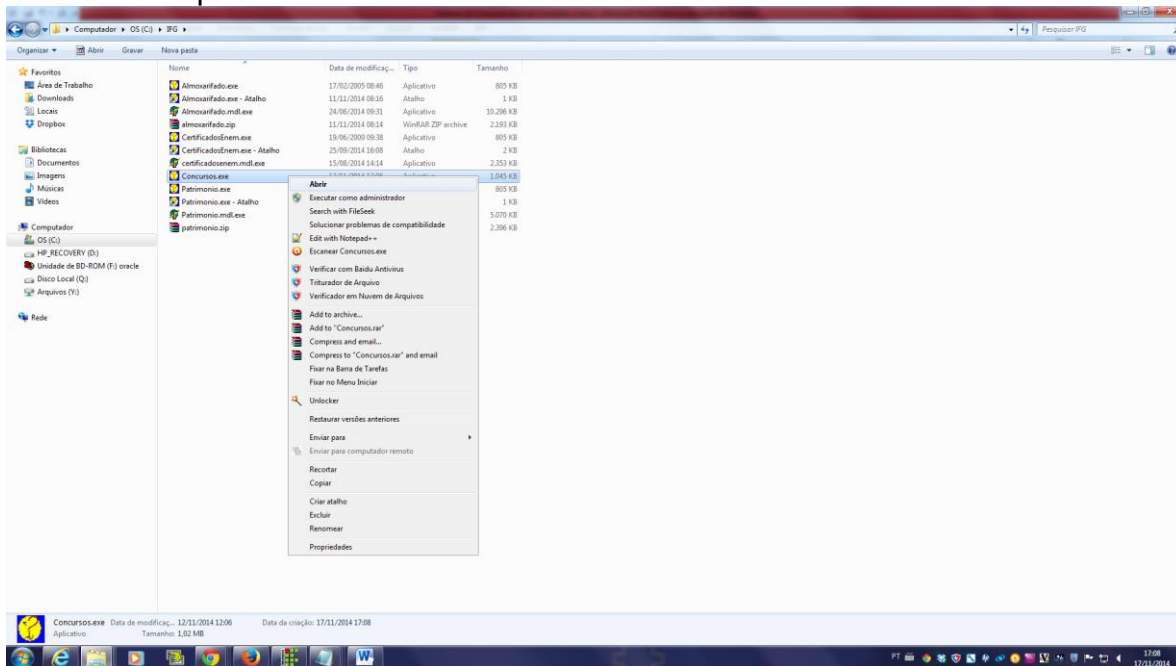
e colar em “C:\IFG”

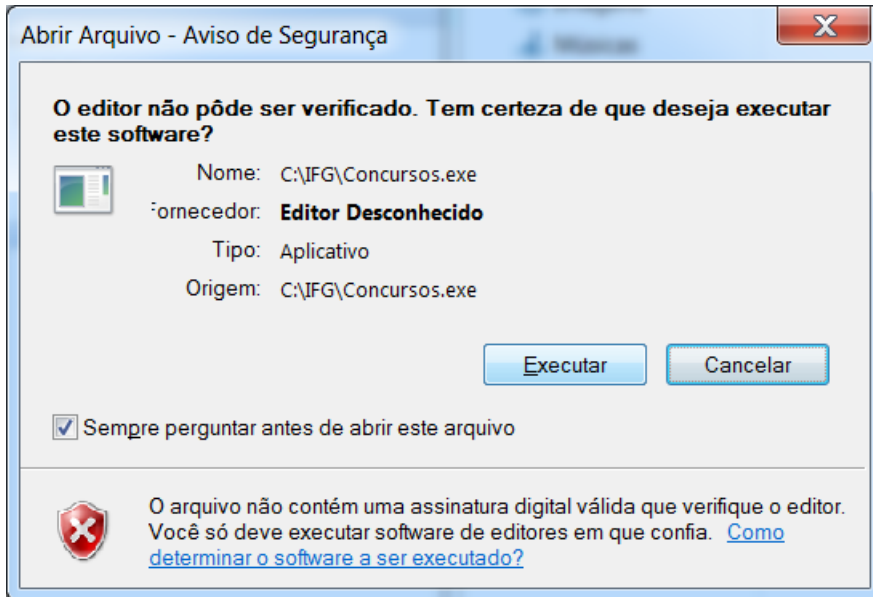


Ficando assim

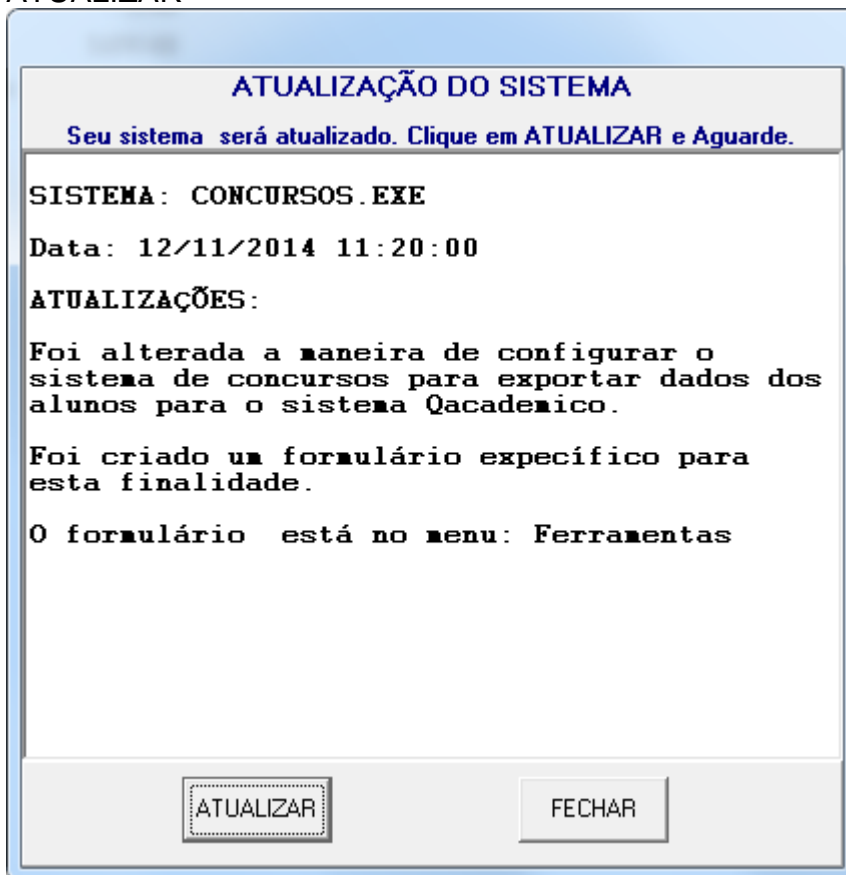


Execute o arquivo

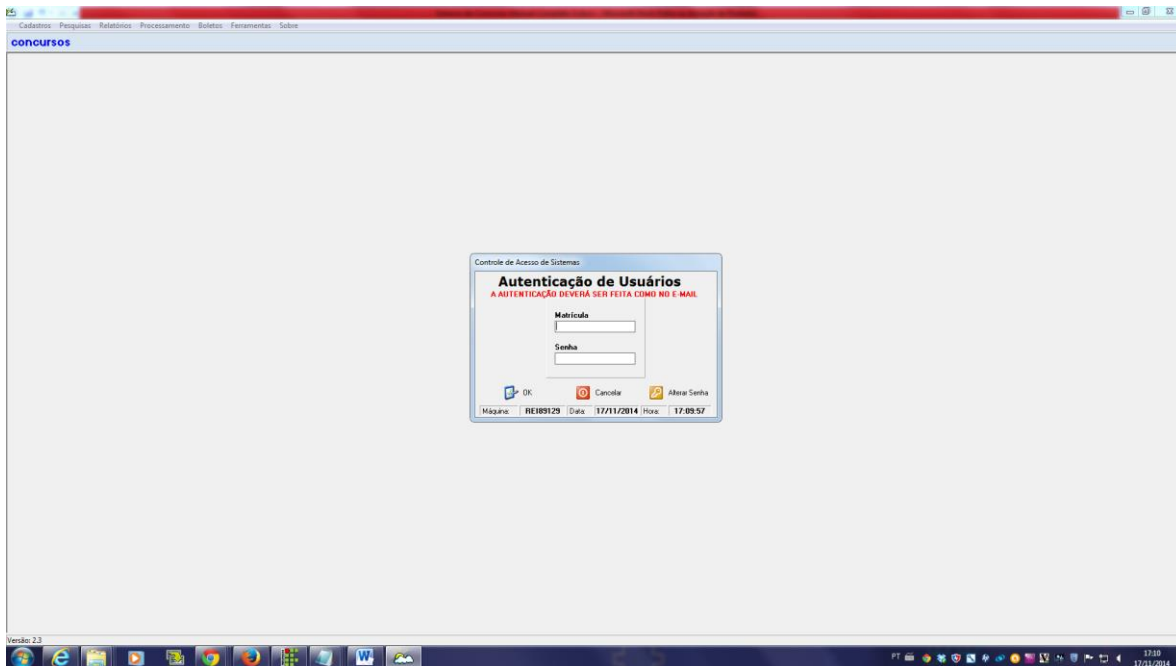




ATUALIZAR



Se aparecer a tela de autenticação, conforme figura abaixo, a instalação foi bem sucedida.

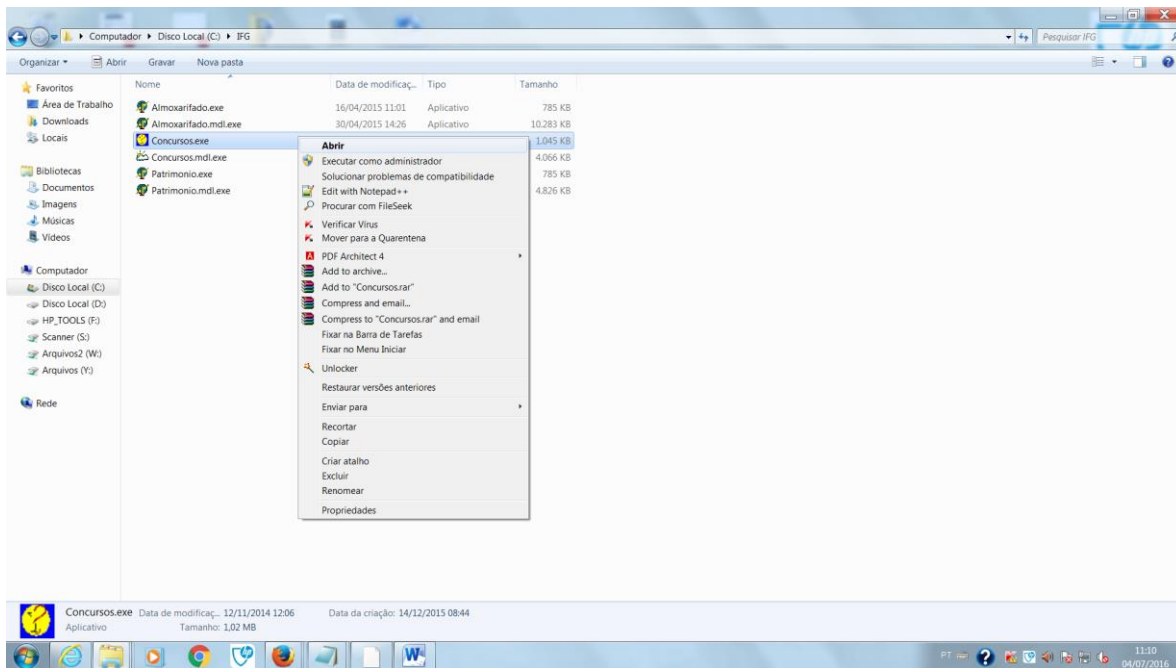


Criar usuário para acesso ao sistema

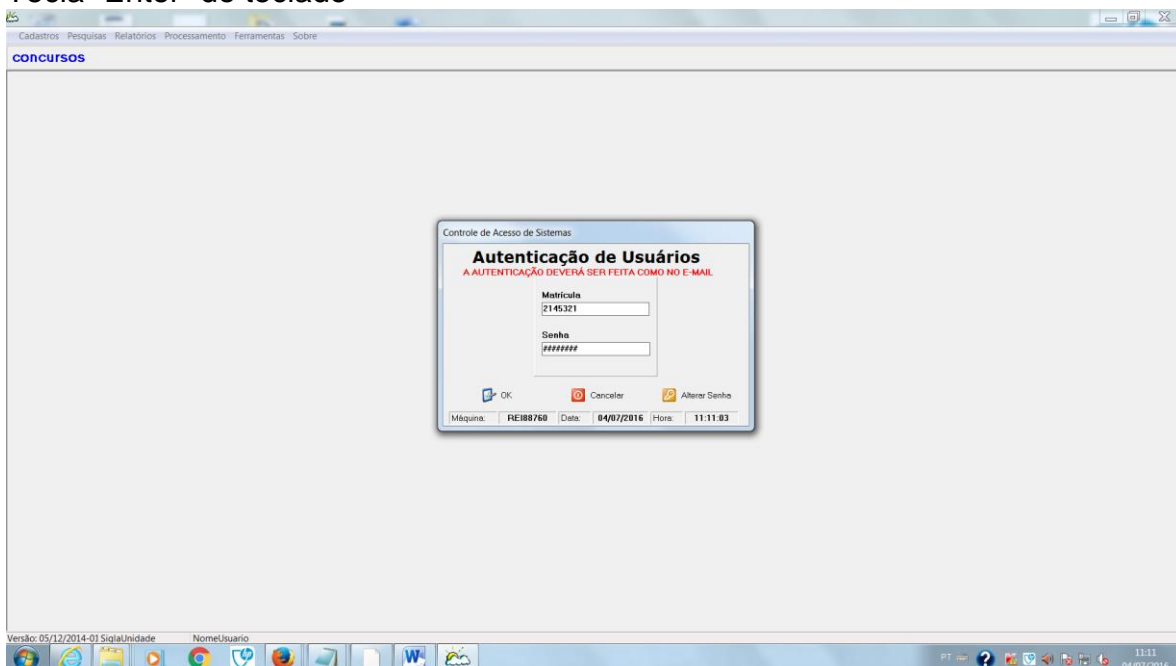
O acesso ao sistema de concursos deve ser solicitado pela **Gerência do Centro de Seleção (3612-2239)** através da abertura de um chamado (acessar: <https://suporte.ifg.edu.br>) ou pelo **Presidente da Comissão do Concurso**, quando for o caso.

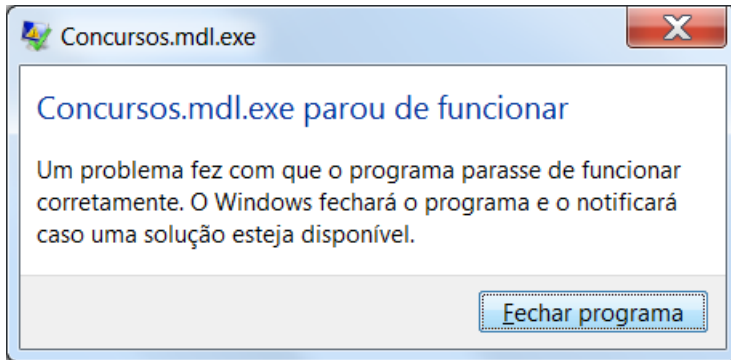
É necessário saber se a permissão é para todos os processos seletivos ou para algum específico.

Erro: "Concursos.mdl.exe parou de funcionar"



Matrícula/Senha Tecla "Enter" do teclado





Solução

Matrícula / Senha

Clicar OK

